

45 Series Electric Door Strike

- **UL Listed, ANSI Grade 1**
- **Low Profile 1-3/16" Backset**
- **Reversible Failsafe - Failsecure**
- **Latch Status Output Standard**
- **Keeper Closed & Locked Status Standard**
- **Horizontal Alignment Adjustment**

The SDC 45 Series electric strike is designed for use with locksets having up to 3/4" latchbolts. The compact low profile design with an internally mounted solenoid and mounting tabs enable quick and easy installation where jamb space is limited. The heavy duty construction makes the 45 Series ideal for high traffic installations.



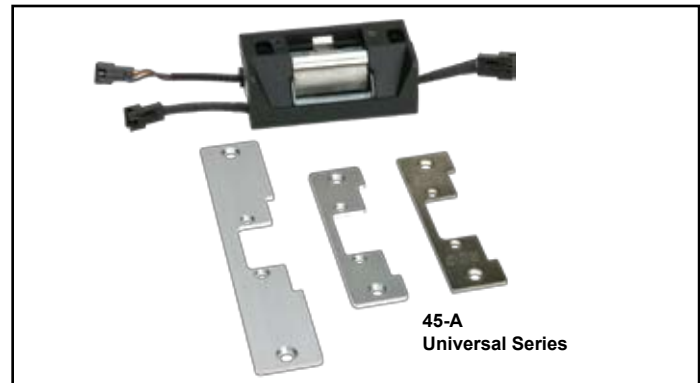
45-4S

45-6R

45-7R

Features

- For 5/8" latch or 3/4" latch with 1/8" door gap
- Latch position status standard
- Keeper closed & deadlocked/unlocked status standard
- Field selectable failsafe - failsecure
- Field selectable voltage, 12/24V AC/DC
- 1/4" Horizontal alignment adjustment
- Low profile, 1-3/16" deep
- Plug-in wire connectors
- Mounting tabs
- Non-handed
- All stainless steel parts with durable die cast body for corrosion resistance
- Fewer moving parts for maximum life
- Stainless steel standard with square corner faceplate
- Aluminum standard with radius corner faceplate
- ANSI A156.31 compliant

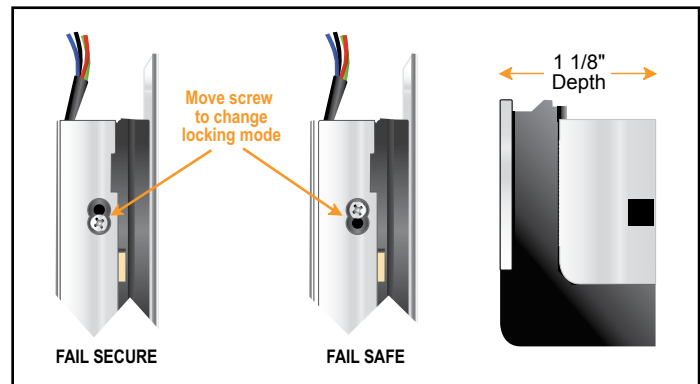


45-A
Universal Series

Model

See reverse for how to specify

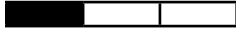
- 45-4S** 4-7/8" x 1-1/4" square corner faceplate
- 45-4R** 4-7/8" x 1-1/4" radius corner faceplate
- 45-6R** 6-7/8" x 1-1/4" radius corner faceplate
- 45-7R** 7-15/16" x 1-7/16" radius corner faceplate
- 45-A** Included:
 - One 4-7/8" square corner faceplate
 - One 4-7/8" radius corner faceplate
 - One 7-15/16" radius corner faceplate



FAIL SECURE

FAIL SAFE

How To Order



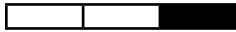
- 45-4S** 4-7/8" x 1-1/4" square corner faceplate
- 45-4R** 4-7/8" x 1-1/4" radius corner faceplate
- 45-6R** 6-7/8" x 1-1/4" radius corner faceplate
- 45-7R** 7-15/16" x 1-7/16" radius corner faceplate
- 45-A** Included:
 - One 4-7/8" square corner faceplate
 - One 4-7/8" radius corner faceplate
 - One 7-15/16" radius corner faceplate

Finish



- U** 630 Dull Stainless Steel (standard with 45-4S)
- V** 628 Dull Aluminum (standard with 45-4R, 45-6R and 45-7R)
- Y** 335 Black Anodized
- D** 606 Dull Brass
- H** 613 Oil Rubbed Bronze

Options



- K** Keeper open/closed status
- RMB** Buzzer 12/24V AC/DC operation

Electrical Specifications

- Dual Voltage Coil:** 280/140mA @ 12/24V DC
170/85mA @ 12/24V AC
- Latch Position Status (std):** SPDT, Dry 3Amp @ 30V
- Keeper Closed & Locked Status (std):** SPDT, Dry 3Amp @ 30V
- Keeper Open/Closed Status (optional):** SPDT, Dry 3Amp @ 30V

Dimensions

- 45-4S / 45-4R:** 1.250" W x 4.875" H x 1.125" D
(31.8 W x 124 H x 28.6 D mm)
- 45-6R:** 1.250" W x 6.875" H x 1.125" D
(31.8 W x 175 H x 28.6 D mm)
- 45-7R:** 1.437" W x 7.937" H x 1.125" D
(36.5 W x 201.6 H x 28.6 D mm)